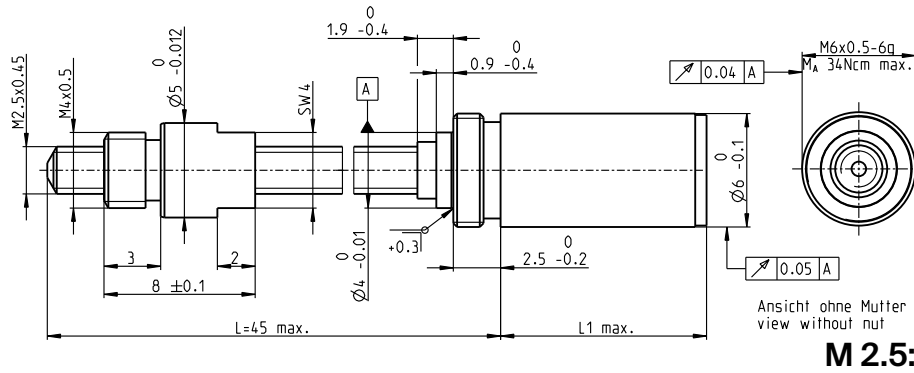


Screw Drive GP 6 S Ø6 mm, metric lead screw



Technical data

| | | | | | |
|---------------------------------------|------------------------------|-----|-----|-----|-----|
| Screw | M2.5 x 0.45, stainless steel | | | | |
| Standard length | 45 mm | | | | |
| Special length (5 mm steps) | max. 80 mm | | | | |
| Nut (standard) | thread nut | | | | |
| Material | bronze* | | | | |
| Axial play | < 0.088 mm | | | | |
| Planetary gearhead | straight teeth | | | | |
| Bearing | ball bearing | | | | |
| Radial play, 5 mm from flange | < 0.12 mm | | | | |
| Axial play | preloaded | | | | |
| Max. continuous input speed | 12 000 rpm | | | | |
| Recommended temperature range | -15...+80°C | | | | |
| Max. axial load (static) ¹ | 10 N | | | | |
| Number of stages | 1 | 2 | 3 | 4 | 5 |
| Max. radial load, 5 mm from flange | 5 N | 5 N | 5 N | 5 N | 5 N |

screw drive

- Stock program
- Standard program
- Special program (on request)

Part numbers

| Screw drive data | 428758 | 428757 | 428756 | 420663 | 428755 | | | |
|---|------------------|--------|-----------|-------------|---------------|-------|--|--|
| 1 Reduction | 3.9 : 1 | 15 : 1 | 57 : 1 | 221 : 1 | 854 : 1 | | | |
| 2 Absolute reduction | 27/7 | 729/49 | 19683/343 | 531441/2401 | 1438907/16807 | | | |
| 20 Max. feed velocity ¹ | mm/s | 15 | 10 | 2.6 | 0.7 | 0.2 | | |
| 21 Max. feed force (continuous) ¹ | N | 2 | 3 | 4 | 6 | 10 | | |
| 22 Max. feed force (intermittent) ¹ | N | 6 | 8 | 12 | 15 | 15 | | |
| 4 Number of stages | 1 | 2 | 3 | 4 | 5 | | | |
| 7 Max. efficiency gearhead incl. screw | % | 28 | 24 | 21 | 19 | 16 | | |
| 8 Weight ¹ | g | 2.9 | 3.3 | 3.7 | 4.1 | 4.5 | | |
| 9 Average backlash no load | ° | 1.8 | 2.0 | 2.2 | 2.5 | 2.8 | | |
| 23 Mechanical positioning accuracy ¹ | mm | 0.106 | 0.107 | 0.107 | 0.107 | 0.108 | | |
| 10 Mass inertia gearhead incl. screw ¹ | gcm ² | 0.001 | 0.001 | 0.001 | 0.001 | 0.001 | | |
| 11 Gearhead length L1 | mm | 6.9 | 9.4 | 12.0 | 14.5 | 17.1 | | |

¹ based on screw length 45 mm



Modular system

| + Motor | Page | + Sensor/Brake | Page | Overall length [mm] = Motor length + gearhead length + (sensor / brake) + assembly parts | | | | |
|----------------|------|----------------|------|--|------|------|------|------|
| RE 6, 0.3 W, A | 129 | | | 22.6 | 25.1 | 27.7 | 30.2 | 32.8 |
| RE 6, 0.3 W, B | 129 | | | 26.6 | 29.1 | 31.7 | 34.2 | 36.8 |

*Note: This spindle nut contains leaded bronze for functional reasons. This product therefore does not fulfill the requirements for the permitted maximum concentration of hazardous substances in accordance with the EC directive 2011/65/EC (RoHS) for all applications. The screw drives may therefore only be used for devices that are not subject to this directive.